

Large-Cap Core Equity

Q2 2021

WestEnd Advisors Overview

FIRM HIGHLIGHTS

- Employee-Owned Asset Management Firm
- Experienced Investment Team Focused on Macro-Based Process
- Investment Strategies for Brokerage Firms and Institutions
- Headquartered in Charlotte, North Carolina

The cornerstone of our investment process is that the macroeconomic environment is a key driver of financial market returns.

Large-Cap Core Equity Overview

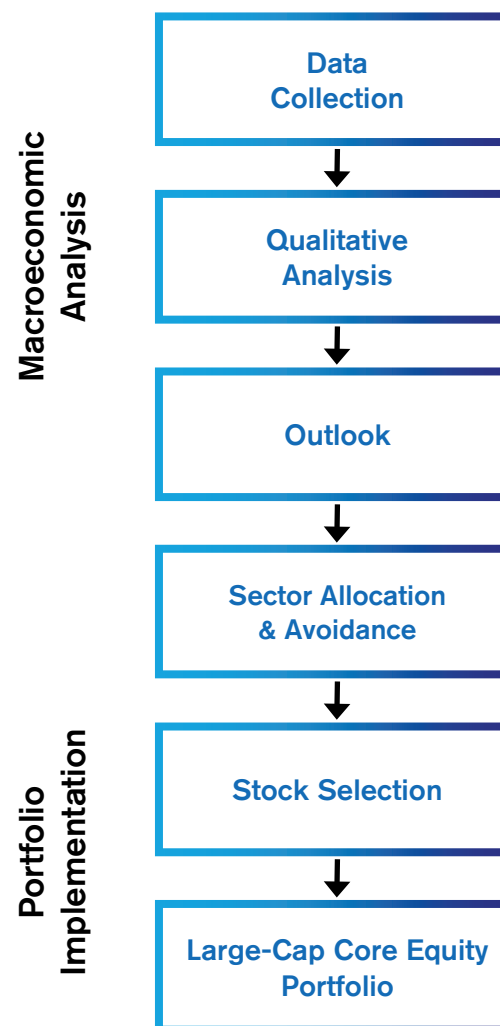
STRATEGY HIGHLIGHTS

- U.S. Large-Cap Equities
- Long Only
- Macro-Based Process
- Sector Emphasis
- Approximately 20 Holdings
- No Leverage, Derivatives, or Options
- Inception January 1996

WestEnd Advisors believes that investments in high-quality companies in their economic time will outperform the broad market.

Large-Cap Core Equity Investment Process

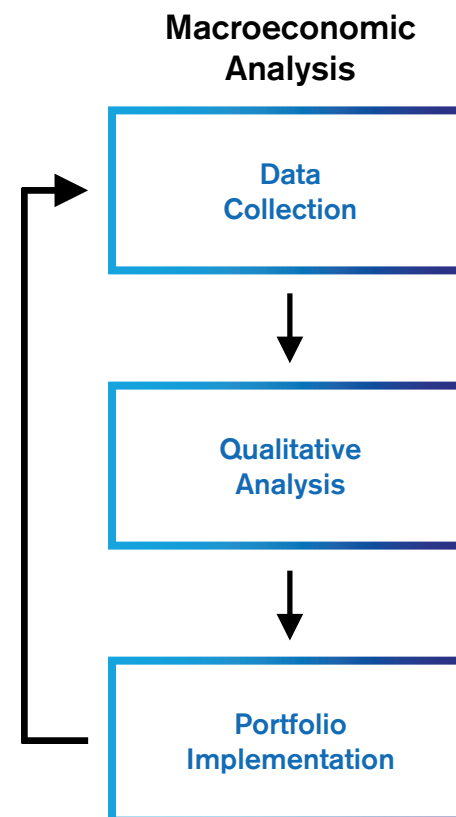
- WestEnd Advisors conducts in-depth analysis of the macroeconomic environment to anticipate areas of strength and weakness in the economy and U.S. equity markets.
- Client portfolios are allocated to sectors of the S&P 500 that we believe will benefit from economic tailwinds, while out-of-favor sectors facing headwinds are avoided.
- WestEnd Advisors then selects market-leading, financially-strong companies that serve as proxies for favored sectors.



For illustrative purposes only.

Macroeconomic Analysis

- WestEnd Advisors' proprietary research process begins with the collection of a broad set of publicly available macroeconomic measures. WestEnd aggregates this information in a database of over 200 domestic and international economic readings.
- The investment team determines which economic data is most important given the current economic environment, and then examines that data in a broader context to develop our economic and market outlook.
- WestEnd Advisors uses this qualitative process and our experience analyzing economic trends to build portfolios that capitalize on opportunities in the financial markets.

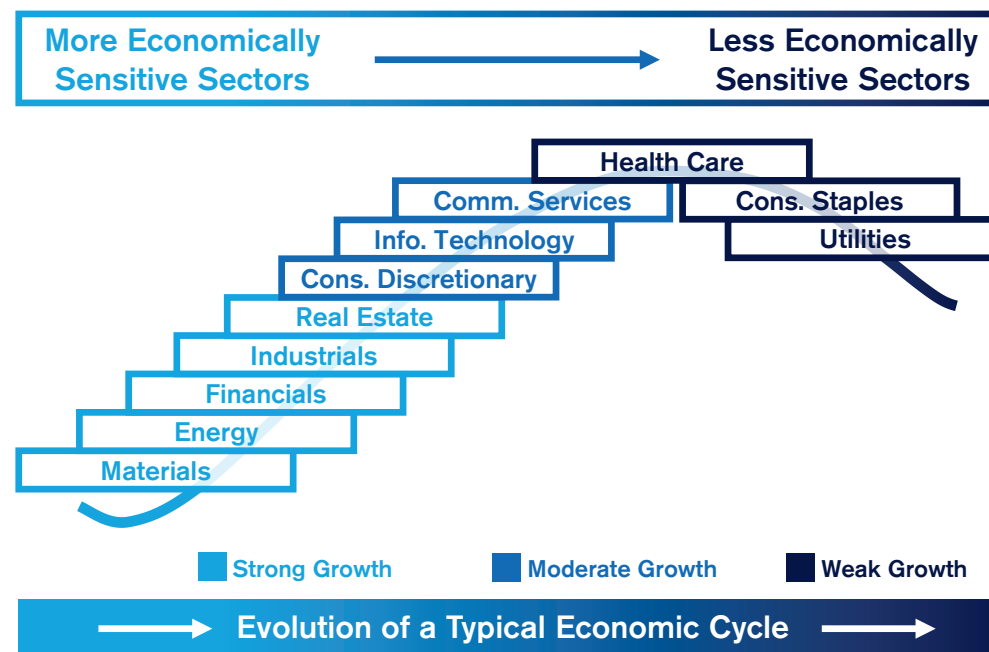


For illustrative purposes only.

WestEnd Advisors conducts in-depth analysis of the macroeconomic environment to anticipate areas of strength and weakness in the financial markets and invests accordingly.

Sector Allocation

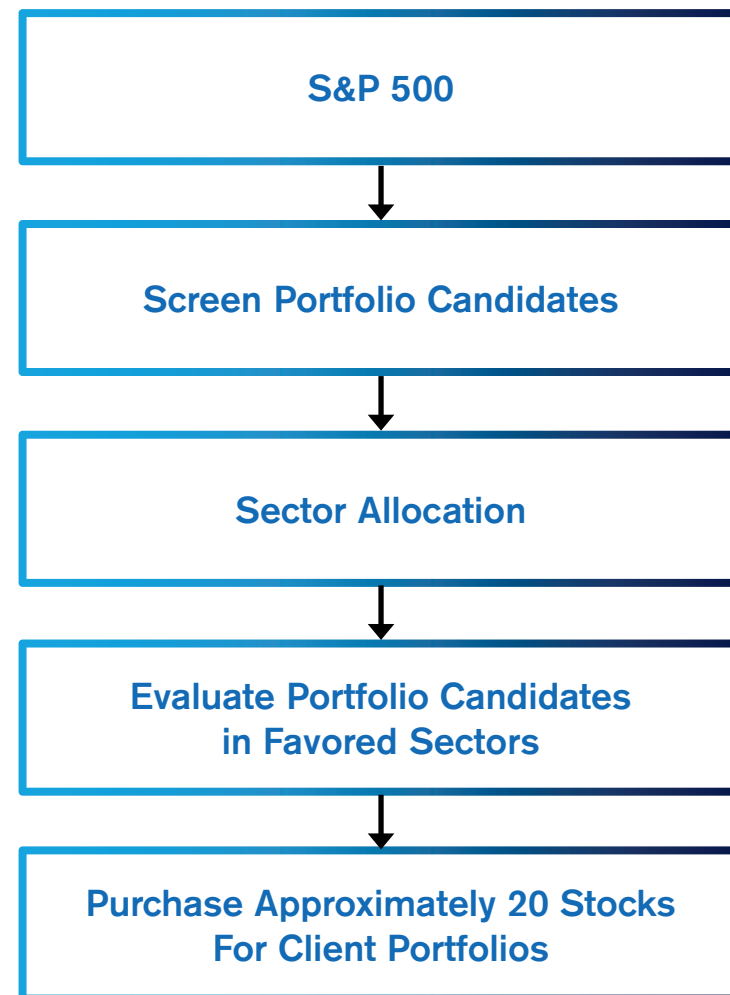
- The path of economic growth is a key driver of S&P 500 sector performance.
- The investment team analyzes recurring cyclical trends and identifies the characteristics particular to the current economic cycle.
- WestEnd actively positions client portfolios in more economically-sensitive sectors when it expects strong growth, and transitions to less economically-sensitive sectors as growth expectations wane.
- Portfolios are typically invested in four to six sectors at any one time based on our macroeconomic outlook, but may be invested in more or fewer sectors as conditions warrant.



For illustrative purposes only.

Stock Selection

- Investment universe is typically S&P 500 companies
- Screening Process
 - Capitalization: Average market capitalization 2 – 3x versus S&P 500
 - Quality: Debt-to-equity ratio, return on equity, earnings growth
 - Market Leadership: Competitive position, benefits from secular tailwinds, experienced management team
- Process leads to approximately ten to twelve names per sector, on average, that are subject to ongoing fundamental research
- Review of WestEnd Advisors' sector allocation to determine favored sectors
- Evaluation continues in favored sectors, and approximately 20 stocks are purchased for client portfolios



For illustrative purposes only.

Fundamental stock research complements and reaffirms WestEnd Advisors' macroeconomic conclusions.

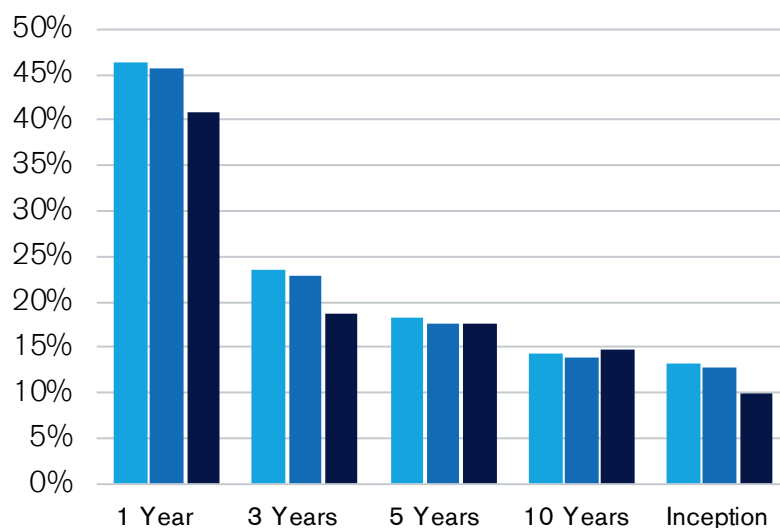
Historical Performance*

Inception 1/1996

ANNUALIZED PERFORMANCE*

Large-Cap Core Equity

Returns as of June 30, 2021



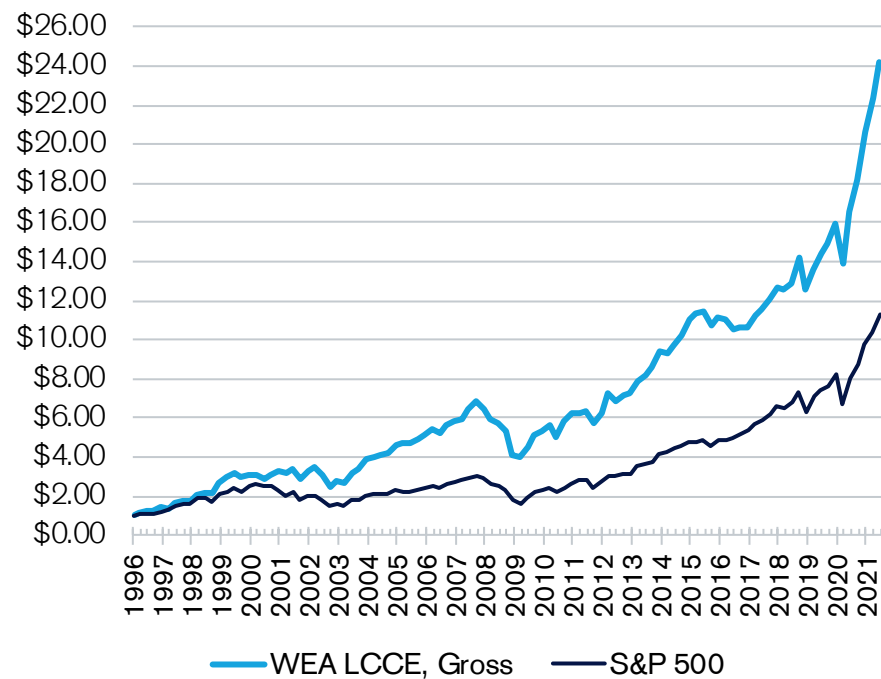
	1 Year	3 Years	5 Years	10 Years	Inception
LCCE, Gross	46.40%	23.50%	18.21%	14.37%	13.31%
LCCE, Net	45.75%	22.88%	17.62%	13.89%	12.77%
S&P 500	40.79%	18.67%	17.65%	14.84%	9.97%

Source: IDC, WestEnd Advisors

LONG-TERM PERFORMANCE**

Growth of a Dollar Since Inception

Large-Cap Core Equity Composite Gross vs. S&P 500 Index



Source: IDC, WestEnd Advisors

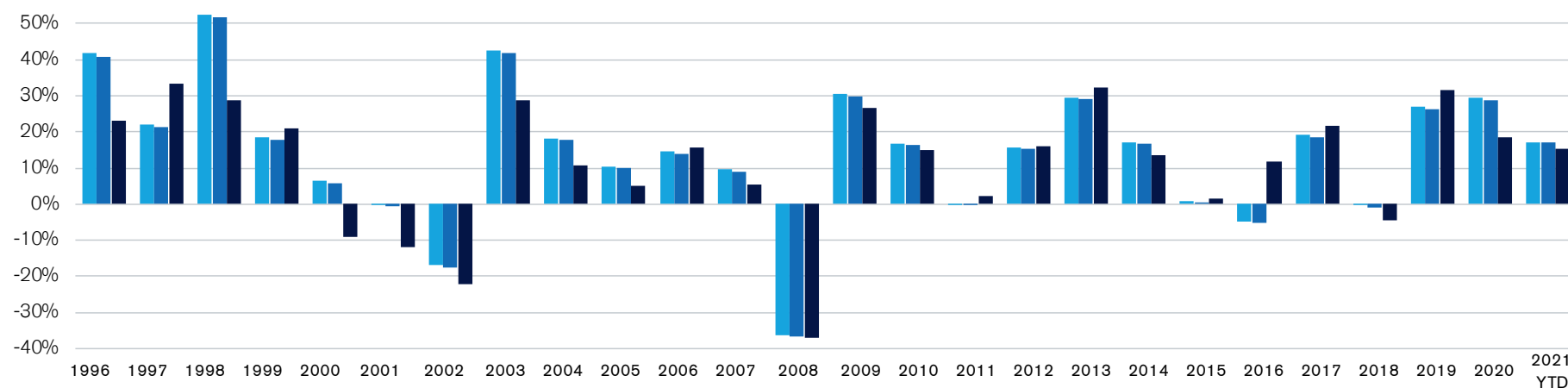
* Based on Large-Cap Core Equity Composite. Returns for periods greater than one year are annualized. See Performance Notes and Footnotes and Disclosures on pages 14-16.

** Supplemental information is based on the Large-Cap Core Equity Composite gross-of-fees.

Annual Performance*

LARGE-CAP CORE EQUITY*

Annual Returns as of June 30, 2021



	1996	1997	1998	1999	2000	2001	2002	2003	2004	2005	2006	2007	2008	2009	2010	2011	2012	2013	2014	2015	2016	2017	2018	2019	2020	2021 YTD
LCCE, Gross	41.73%	21.96%	52.41%	18.57%	6.38%	-0.21%	-16.99%	42.36%	18.28%	10.47%	14.71%	9.69%	-36.21%	30.60%	16.90%	0.00%	15.64%	29.55%	17.15%	0.97%	-4.75%	19.25%	-0.36%	26.92%	29.28%	17.20%
LCCE, Net	40.85%	21.33%	51.66%	17.97%	5.83%	-0.70%	-17.42%	41.73%	17.68%	9.92%	14.06%	9.08%	-36.61%	29.98%	16.43%	-0.34%	15.26%	29.15%	16.74%	0.64%	-5.12%	18.65%	-0.94%	26.23%	28.69%	16.94%
S&P 500 Index	22.96%	33.36%	28.58%	21.04%	-9.10%	-11.89%	-22.10%	28.68%	10.88%	4.91%	15.80%	5.49%	-37.00%	26.46%	15.06%	2.11%	16.00%	32.39%	13.69%	1.38%	11.96%	21.83%	-4.38%	31.49%	18.40%	15.25%

Source: IDC, WestEnd Advisors

* Based on Large-Cap Core Equity Composite. See Performance Notes and Footnotes and Disclosures on pages 14-16.

Differentiated Equity Strategy*

PORTFOLIO DIVERSIFICATION

The Large-Cap Core Equity strategy's sector and security concentration, along with a differentiated macro-based investment process, can enhance diversification for a client's full portfolio.

- R-Squared and Correlation with the S&P 500 Index are lower than 83% of its large-cap core peers over the past five years.**
- Tracking Error is higher than 69% of its large-cap core peers over the past five years.**

RELATIONSHIP BETWEEN LARGE-CAP CORE EQUITY and the S&P 500

	Trailing 5 Years		Trailing 10 Years		Since Inception	
	WEA LCCE	Peer Rank	WEA LCCE	Peer Rank	WEA LCCE	Peer Rank
Tracking Error	5.14%	69%	5.30%	88%	7.58%	82%
R-Squared	88%	83%	85%	97%	79%	82%
Correlation to S&P 500 Index	0.94	83%	0.92	97%	0.89	82%

Source: IDC; Informa; WestEnd Advisors

* Supplemental information based on Large-Cap Core Equity Composite gross-of-fees. See Performance Notes and Footnotes and Disclosures on pages 14-16.

**Percentile ranks are based on PSN's large-cap core peer universe as of 6/30/2021.

Rolling Returns, Alpha & Risk Metrics*

SHORT-TERM VARIABILITY, LONG-TERM CONSISTENCY*

Rolling 1-Year Returns

Periods of Outperformance	60 out of 99 periods, or 61%
Average Annualized Outperformance	2.97 percentage points

Rolling 3-Year Returns

Periods of Outperformance	63 out of 91 periods, or 69%
Average Annualized Outperformance	2.84 percentage points

Rolling 5-Year Returns

Periods of Outperformance	57 out of 83 periods, or 69%
Average Annualized Outperformance	2.75 percentage points

Source: IDC, WestEnd Advisors

RISK AND RETURN SUMMARY*

	Trailing 5 Years		Trailing 10 Years	
	WEA LCCE	S&P 500	WEA LCCE	S&P 500
Return	18.21%	17.65%	14.37%	14.84%
Standard Deviation	14.40%	16.86%	13.47%	14.85%
Alpha	3.58%	n/a	1.74%	n/a
Beta	0.82	1.00	0.84	1.00
Sharpe Ratio	1.19	0.98	1.02	0.96
R-Squared	88%	n/a	85%	n/a
Tracking Error	5.14%	n/a	5.30%	n/a
Upside Capture	91.9%	100.0%	89.8%	100.0%
Downside Capture	75.6%	100.0%	80.0%	100.0%

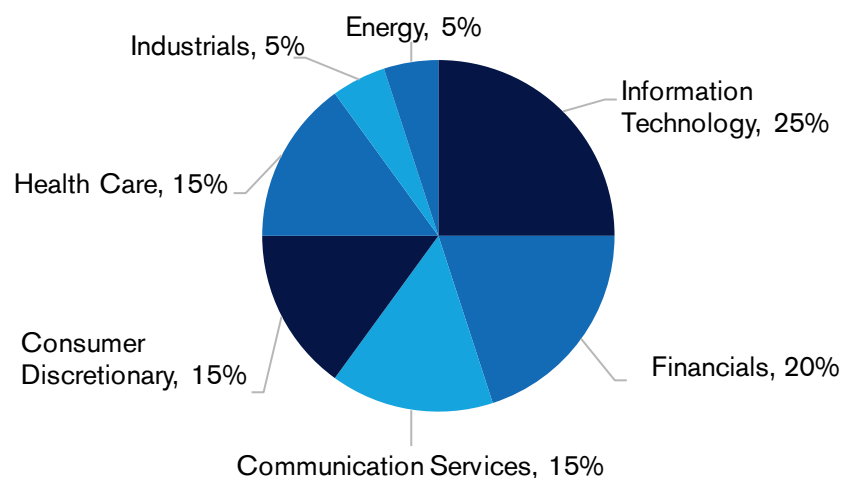
Source: IDC, Informa, WestEnd Advisors

The Large-Cap Core Equity strategy seeks to provide long-term capital appreciation and to minimize periods of significant negative returns by investing in market-leading, financially-strong U.S. companies that serve as proxies for favored sectors.

*Supplemental information is based on the Large-Cap Core Equity Composite gross-of-fees as of 6/30/2021. See Performance Notes and Footnotes and Disclosures on pages 14-16.

Portfolio Snapshot* (as of June 30, 2021)

MODEL PORTFOLIO WEIGHTS



Source: Bloomberg, WestEnd Advisors

PORTFOLIO CHARACTERISTICS

	Large-Cap Core Equity	S&P 500
Price/Earnings (trailing)	33.0x	30.3x
Price/Book	4.2x	4.6x
Dividend Yield	1.7%	1.4%
Weighted Average Market Cap.	\$584.0B	\$543.0B

Source: Bloomberg, iShares, State Street, Vanguard, Dow Jones, WestEnd Advisors

CURRENT HOLDINGS

Communication Services

Alphabet Inc. (GOOGL)
Comcast Corp. (CMCSA)
Facebook, Inc. (FB)

Consumer Discretionary

Amazon.com, Inc. (AMZN)
Home Depot Inc. (HD)
TJX Companies, Inc. (TJX)

Energy

Chevron Corp. (CVX)

Financials

American Express Co. (AXP)
Bank of America Corp. (BAC)
JPMorgan Chase & Co. (JPM)
PNC Financial Services Grp (PNC)
Wells Fargo & Co. (WFC)

Industrials

Honeywell International, Inc. (HON)

Health Care

Johnson & Johnson (JNJ)
Medtronic plc (MDT)
UnitedHealth Group Inc. (UNH)

Information Technology

Apple Inc. (AAPL)
Mastercard Inc. (MA)
Microsoft Corp. (MSFT)
PayPal Holdings, Inc. (PYPL)
Qualcomm Inc. (QCOM)
Salesforce.com, Inc. (CRM)

PORTFOLIO COMPOSITION

Number of Holdings

Approximately 20 (Typically 5% at cost)

Maximum Individual Equity Exposure

10%

Target Cash Position

2% to 5%

Maximum Industry Exposure

15% at cost

Annual Turnover Range

26% to 61%**

Maximum Sector Exposure

35% at cost

* Supplemental information is based on the Large-Cap Core Equity Composite gross-of-fees. See Performance Notes and Footnotes and Disclosures on pages 14-16.

** Based on 5 years ended 12/31/20.

Investment Team Biographies

NED DURDEN

**Partner, Chief Investment Strategist,
Portfolio Manager**

Ned Durden is a Partner at WestEnd Advisors, Chief Investment Strategist (CIS), and a Portfolio Manager for the firm's investment strategies. In addition to his portfolio management responsibilities, as CIS, Ned is responsible for distilling the Investment Team's outlook and research to ensure clear, accurate, and effective communication of the firm's investment views and portfolio positioning. He also conducts sector and security analysis along with macroeconomic research used to guide decisions across the firm's investment strategies. Ned entered the financial services industry in 1997 and joined WestEnd Advisors in 2006. Before joining WestEnd, he was a founding member and Senior Analyst at Cambium Capital, a long/short equity hedge fund. Prior to that, Ned was a Director at the MONY Group, a diversified financial services firm. Ned is a graduate of the University of Virginia, where he received his B.A. degree. He also received his MBA from the University of Virginia, Darden School of Business and his law degree from the University of Virginia School of Law (JD/MBA).

FRITZ PORTER, CFA

**Partner, Chief Investment Officer,
Portfolio Manager**

Fritz Porter is a Partner at WestEnd Advisors, Chief Investment Officer, and a Portfolio Manager for the firm's investment strategies. In addition to his portfolio management responsibilities, Fritz leads the firm's research meetings and conducts macroeconomic, sector and security analysis. Fritz entered the financial services industry in 1999 and joined WestEnd Advisors in 2008. Prior to joining WestEnd, he held asset management and investment banking positions at Wachovia Securities, U.S. Trust, and State Street Global Advisors. Fritz holds the Chartered Financial Analyst (CFA) designation. He is a graduate of Davidson College, where he received his B.A. degree, and he earned his MBA from Duke University's Fuqua School of Business.

TY PEEBLES, CFA, CPA

Partner, Portfolio Manager

Ty Peebles is a Partner at WestEnd Advisors and a Portfolio Manager for the firm's investment strategies. In addition to his portfolio management responsibilities, Ty conducts macro analysis on the U.S. and overseas economies as well as security research to support the management of all the firm's investment strategies. Ty entered the financial services industry in 2010 and joined WestEnd Advisors in 2014. Prior to joining WestEnd, he worked at Global Endowment Management, an Outsourced Chief Investment Officer (OCIO) to endowments and foundations. Before that, he worked as a Certified Public Accountant (CPA) with Ernst & Young LLP. Ty holds the Chartered Financial Analyst (CFA) designation. He is a graduate of the University of North Carolina at Chapel Hill, where he received his B.A. in Economics, and he earned his Master of Accounting degree from UNC's Kenan-Flagler Business School.

Investment Team Biographies (cont.)

JACOB BUCHANAN

Investment Analyst

Jacob Buchanan is an Investment Analyst and conducts research and analysis to support the management of the firm's investment strategies. Jacob entered the financial services industry in 2016 and joined WestEnd Advisors in 2018. Prior to joining WestEnd, he worked at Credit Suisse supporting the CFO of the firm's securitized products division where he was responsible for internal financial analysis and forecasting. Prior to that role, he served as an analyst supporting Credit Suisse's Global Markets trading division, conducting expense and cost savings analysis. Jacob is a graduate of the University of North Carolina at Chapel Hill, where he received his B.A. in Economics, and studied Statistics and Operations Research.

ROGER REGELBRUGGE, JR.

Investment Analyst

Roger Regelbrugge is an Investment Analyst and conducts research and analysis to support the management of the firm's investment strategies. Roger entered the financial services industry in 2014 and joined WestEnd Advisors in 2019. Prior to joining WestEnd, he worked as a credit risk analyst with UBS AG, where he was responsible for assessing hedge fund counterparty risk across a range of trading strategies and products. Prior to that role, he served as an equity research analyst for Avondale Partners, a boutique investment bank headquartered in Nashville, TN. Roger holds the Financial Risk Manager (FRM) and Chartered Market Technician (CMT) designations, and is a graduate of Belmont University in Nashville, TN, where he received his B.B.A. in Economics.

Performance Notes

LARGE-CAP CORE EQUITY COMPOSITE PERFORMANCE

December 31, 1995 Through December 31, 2020

Year	Composite Returns Gross-of-Fees	Composite Returns Net-of-Fees	S&P 500 Returns	Composite 3-YR Std. Dev.	S&P 500 3-YR Std. Dev.	Number of Portfolios	Composite Dispersion (Std. Dev.)	Composite Assets (\$MM)	Strategy Advisory-Only Assets* (\$MM)	Total Strategy Assets* (\$MM)	Total Firm Assets (\$MM)	Firm Advisory- Only Assets* (\$MM)	Total Assets (Firm + Advisory-Only)* (\$MM)
1996	41.73%	40.85%	22.96%	N/A	N/A	≤ 5	N/A	\$14.36	N/A	\$14.36	\$32.22	N/A	\$32.22
1997	21.96%	21.33%	33.36%	N/A	N/A	≤ 5	N/A	\$17.42	N/A	\$17.76	\$37.99	N/A	\$37.99
1998	52.41%	51.66%	28.58%	N/A	N/A	≤ 5	N/A	\$26.42	N/A	\$27.10	\$53.23	N/A	\$53.23
1999	18.57%	17.97%	21.04%	N/A	N/A	≤ 5	N/A	\$35.54	N/A	\$37.22	\$64.50	N/A	\$64.50
2000	6.38%	5.83%	-9.10%	N/A	N/A	≤ 5	N/A	\$37.55	N/A	\$39.17	\$68.58	N/A	\$68.58
2001	-0.21%	-0.70%	-11.89%	N/A	N/A	≤ 5	N/A	\$3.35	N/A	\$4.82	\$12.79	N/A	\$12.79
2002	-16.99%	-17.42%	-22.10%	N/A	N/A	≤ 5	N/A	\$2.38	N/A	\$12.24	\$14.67	N/A	\$14.67
2003	42.36%	41.73%	28.68%	N/A	N/A	≤ 5	N/A	\$7.89	N/A	\$26.71	\$27.90	N/A	\$27.90
2004	18.28%	17.68%	10.88%	18.48%	14.86%	6	1.14%	\$12.49	\$0.92	\$53.28	\$89.77	\$0.92	\$90.69
2005	10.47%	9.92%	4.91%	12.82%	9.04%	7	0.66%	\$17.28	\$10.12	\$89.23	\$145.78	\$10.12	\$155.90
2006	14.71%	14.06%	15.80%	10.85%	6.82%	12	0.46%	\$30.62	\$17.73	\$187.63	\$250.36	\$17.73	\$268.10
2007	9.69%	9.08%	5.49%	10.92%	7.68%	15	0.34%	\$43.55	\$36.41	\$422.36	\$464.36	\$36.41	\$500.77
2008	-36.21%	-36.61%	-37.00%	18.85%	15.08%	17	0.97%	\$33.70	\$46.94	\$377.69	\$384.78	\$46.94	\$431.72
2009	30.60%	29.98%	26.46%	22.09%	19.63%	23	0.54%	\$139.98	\$119.89	\$684.83	\$620.00	\$119.89	\$739.89
2010	16.90%	16.43%	15.06%	24.50%	21.85%	23	0.40%	\$517.53	\$237.53	\$1,741.62	\$1,559.49	\$237.53	\$1,797.01
2011	0.00%	-0.34%	2.11%	19.05%	18.71%	21	0.10%	\$510.46	\$481.33	\$2,489.26	\$2,058.05	\$481.33	\$2,539.38
2012	15.64%	15.26%	16.00%	15.74%	15.09%	21	0.19%	\$850.60	\$658.35	\$3,451.91	\$2,835.47	\$658.35	\$3,493.81
2013	29.55%	29.15%	32.39%	11.85%	11.94%	23	0.29%	\$583.99	\$988.70	\$3,807.09	\$2,830.31	\$988.70	\$3,819.01
2014	17.15%	16.74%	13.69%	10.00%	8.97%	18	0.06%	\$528.57	\$772.15	\$2,883.83	\$2,121.79	\$801.58	\$2,923.37
2015	0.97%	0.64%	1.38%	11.23%	10.47%	18	0.07%	\$463.15	\$949.86	\$2,900.41	\$1,963.44	\$1,356.62	\$3,320.06
2016	-4.75%	-5.12%	11.96%	11.38%	10.59%	15	0.36%	\$82.27	\$924.89	\$1,879.45	\$978.44	\$1,854.39	\$2,832.83
2017	19.25%	18.65%	21.83%	10.41%	9.92%	19	0.13%	\$22.05	\$821.05	\$1,554.72	\$776.46	\$2,638.47	\$3,414.93
2018	-0.36%	-0.94%	-4.38%	10.97%	10.80%	17	0.21%	\$16.48	\$706.92	\$1,220.18	\$587.04	\$3,340.47	\$3,927.51
2019	26.92%	26.23%	31.49%	10.87%	11.93%	20	0.16%	\$24.21	\$759.58	\$1,286.75	\$812.84	\$5,408.40	\$6,221.24
2020	29.28%	28.69%	18.40%	17.32%	18.53%	19	0.28%	\$33.53	\$949.67	\$1,527.38	\$992.87	\$10,449.81	\$11,442.69

* Strategy Advisory-Only Assets, Total Strategy Assets, Firm Advisory-Only Assets, and Total Assets are supplemental information to the GIPS Report and include Advisory-Only assets.

See the following pages for important Footnotes and Disclosures.

Footnotes & Disclosures

WestEnd Advisors is an SEC-registered investment advisor. Registration of an investment adviser does not imply any level of skill or training. The firm is an independent investment management firm, 100% owned by its active principals. WestEnd manages equity securities for individual, institutional and wrap clients. Total firm assets include all discretionary assets managed by WestEnd Advisors.

WestEnd Advisors' Large-Cap Core Equity Composite is invested solely in U.S. Equity securities and/or high-grade money market instruments. Returns are achieved without the use of options, derivatives, or leverage of any kind. Results are calculated daily using the aggregate method, use trade date valuations, and include cash as well as the reinvestment of dividends, interest income, and other earnings, if applicable. Portfolio returns are weighted using beginning of period values plus weighted cash flows. Portfolios and composites are valued daily, are denominated in U.S. dollars only, and include discretionary non-wrap accounts with a minimum of \$500,000 invested in the Large-Cap Core Equity Model. The Composite excludes broadly distributed fund accounts. Prior to January 1, 2017, the Composite minimum was \$1,000,000 and excluded taxable accounts.

Composite performance results and the percentage of firm assets from December 31, 1995 to December 31, 2002 were realized under WestEnd Advisors' predecessor firm Providence Capital Management, Inc. in the Large-Cap Core Equity Composite. The Large-Cap Core Equity Composite creation and inception date is December 31, 1995.

Net-of-fee performance results are presented after investment management fees paid to WestEnd Advisors, as well as after brokerage or other commissions actually paid by clients in the management of their investment advisory account, but exclude any deductions for custodial fees. The current management fee schedule, as described in WestEnd Advisors' SEC Form ADV Part 2, is as follows: 1.00% for accounts valued at \$100,000 to \$4,999,999; 0.90% for accounts valued at \$5,000,000 to \$9,999,999; 0.75% for accounts valued at \$10,000,000 to \$24,999,999; 0.65% for accounts valued at \$25,000,000 to \$49,999,999; and 0.50% for accounts valued over \$50,000,000. Fees are negotiable where circumstances warrant.

Past performance is not indicative of future results. It should not be assumed that recommendations made in the future will be profitable. The information contained herein is not intended to be an offer to provide investment advisory services. Such an offer may only be made if accompanied by WestEnd Advisors' SEC Form ADV Part 2.

The S&P 500[®] is used for comparative purposes only. The S&P 500[®], our primary benchmark, includes approximately 500 stocks and is a common measure of the performance of the overall U.S. stock market. The S&P 500[®] Index measures the performance of 500 leading companies in the U.S. economy. The S&P 500[®] Index focuses on the large-cap segment of the market, with approximately 75% coverage of U.S. equities. The S&P 500[®] Index is designed to be an indicator of U.S. equities and is meant to reflect the risk/return characteristics of the large-cap universe. The S&P 500[®] Index is a market capitalization-weighted index - each stock's weight in the index is proportionate to its market capitalization. Benchmark returns are not covered by the report of independent verifiers.

The dispersion of annual returns is measured by the standard deviation of the asset-weighted portfolio returns included in the composite for the full year. Dispersion is calculated based on gross returns and is not shown when there are five or fewer portfolios, as the calculation is not statistically meaningful. The 3-year ex post standard deviation is calculated based upon gross returns.

Strategy Advisory-Only assets are assets for which WestEnd provides Model Portfolios but has no discretion to effect trades, and no supervisory responsibility over the assets in the program.

A complete list and description of all WestEnd Advisors' composites as well as a presentation that complies with the requirements of the Global Investment Performance Standards (GIPS[®]) is available upon request by phone (888-500-9025) or email (info@westendadvisors.com).

Policies for valuing investments, calculating performance, and preparing GIPS Reports is available upon request.

Footnotes & Disclosures

Holdings, Sector Weightings, and Portfolio Characteristics were current as of the date specified in this presentation. The listing of particular securities should not be considered a recommendation to purchase or sell these securities. While these securities were among WestEnd Advisors' Large-Cap Core Equity holdings at the time this material was assembled, holdings will change over time. There can be no assurance that the securities remain in the portfolio or that other securities have not been purchased. It should not be assumed that recommendations made in the future will be profitable or will equal the performance of the securities presently in the portfolio. Individual clients' portfolios may vary. Upon request, WestEnd Advisors will provide a list of all recommendations for the prior year.

WestEnd Advisors claims compliance with the Global Investment Performance Standards (GIPS®) and has prepared and presented this report in compliance with the GIPS® standards. WestEnd Advisors has been independently verified for the periods December 31, 1995 through March 31, 2021.

A firm that claims compliance with the GIPS standards must establish policies and procedure for complying with all the applicable requirements of the GIPS standards. Verification provides assurance on whether the firm's policies and procedures related to composite and pooled fund maintenance, as well as the calculation, presentation, and distribution of performance, have been designed in compliance with the GIPS standards and have been implemented on a firm-wide basis. The Large-Cap Core Equity Composite has had a performance examination from composite inception through December 31, 2020. The verification and performance examination reports are available upon request.

GIPS® is a registered trademark of CFA Institute. CFA Institute does not endorse or promote this organization, nor does it warrant the accuracy or quality of the content contained herein.

June 2021